

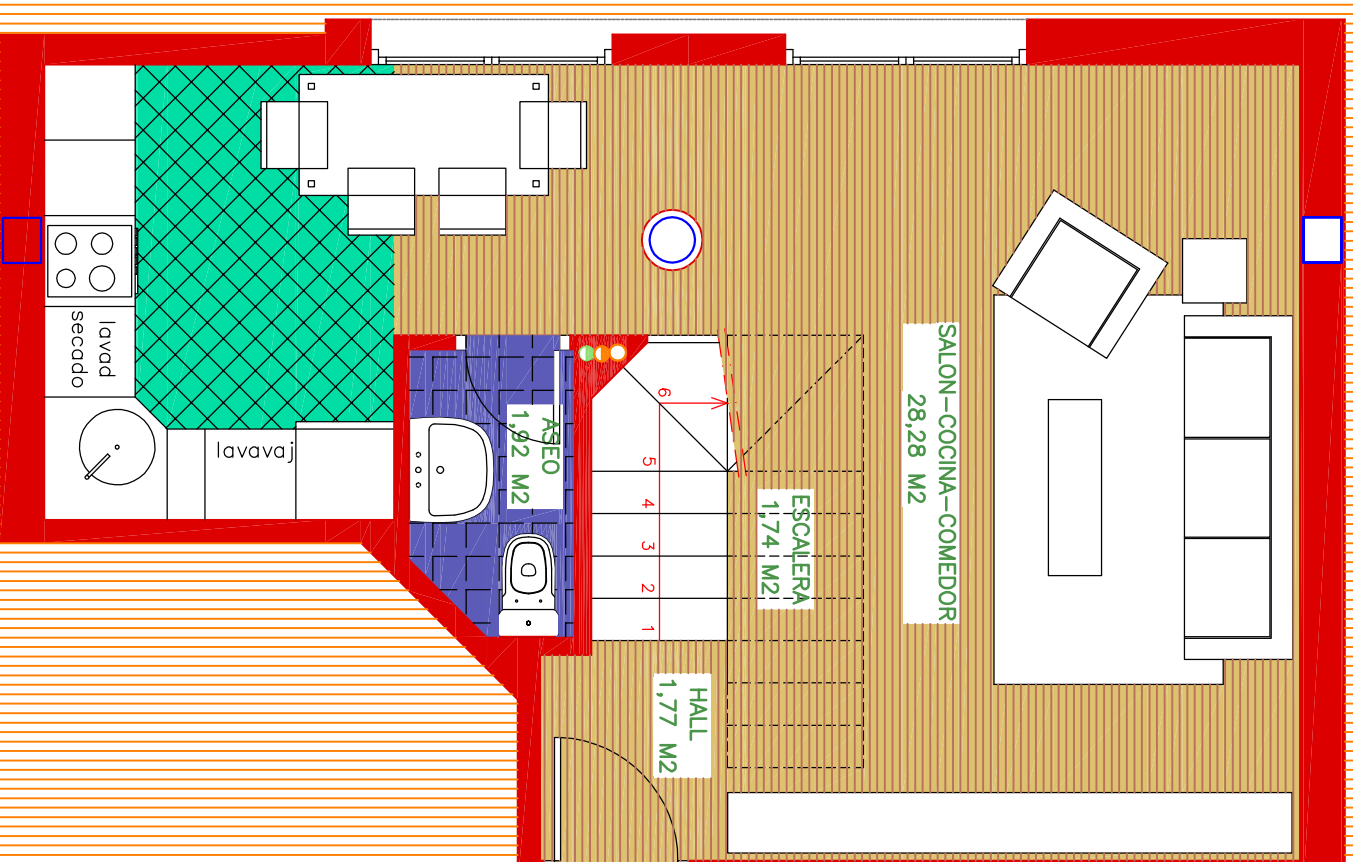
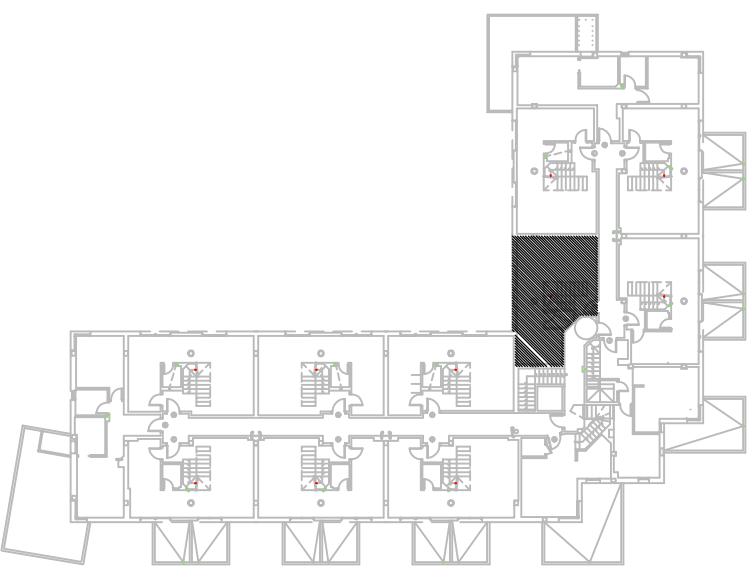
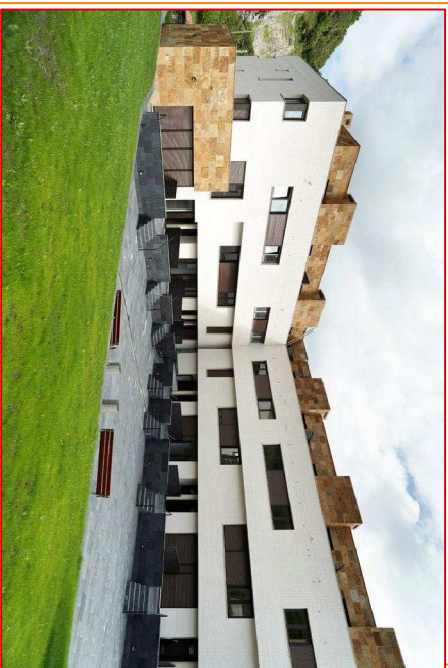
TIPO J2

PLANTA SEGUNDA

SUP. UTIL33,71 M2

SUP. DE TERRAZAS (100%)..... 17,81 M2

SUP. UTIL DE VIVIENDA.....66,05 M2



J2
66,05 M2

TIPO J2

PLANTA ATICO

SUP. UTIL32,34 M2

SUP. DE TERRAZAS (100%).....17,81 M2

SUP. UTIL DE VIVIENDA.....66,05 M2

